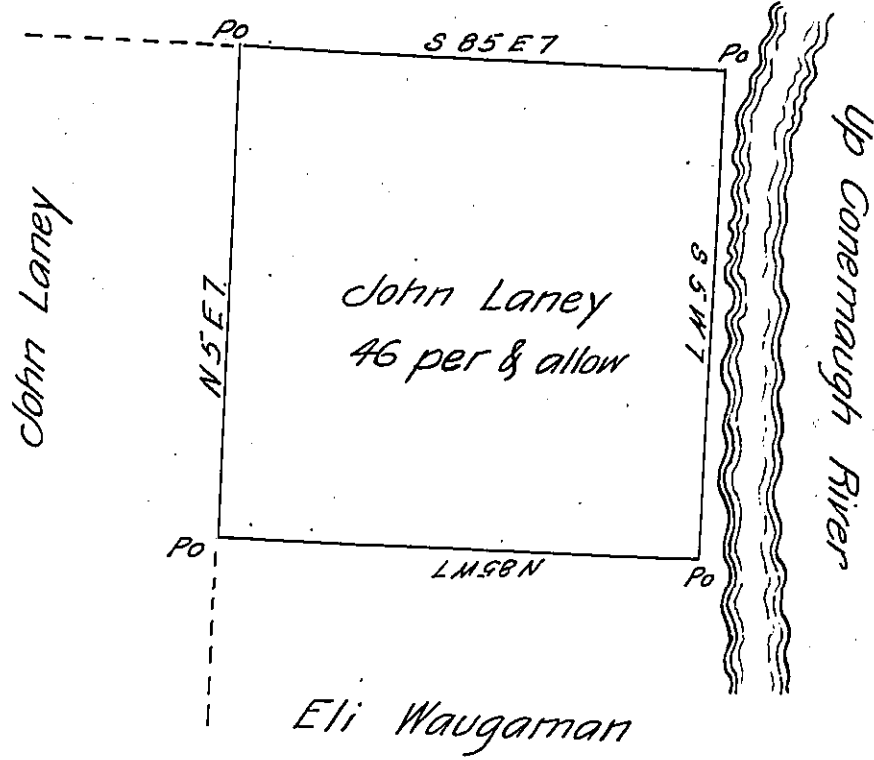


Stephen Cornwell



Surveyed August 20th 1868. In pursuance of a Warrant granted to John Laney, dated July 23^d 1868. Situate on the Conemaugh River in Derry Township Westmoreland County Pa. Containing 46 per & allowance.

A. M. Altman, C.S.

To J. M. Campbell Esq
 Surveyor General of Pa.

IN TESTIMONY that the above is a copy of the original remaining on file in the Department of Internal Affairs of Pennsylvania, made conformably to an Act of Assembly approved the 16th day of February, 1833, I have hereunto set my Hand and caused the Seal of said Department to be affixed at Harrisburg, this.....eleventh.....day of.....September.....1905.

[Signature]
 Secretary of Internal Affairs.